

BYRD—Byrd's Adventure Center

Ozark, AR

35.6774483 / -93.7322831

Elevation: 795'

RHI: 15 (RW 07/25 - A/D 25)

A/E	A/D	RSH
6	8	1

Ownership: Private

Use: **Public**

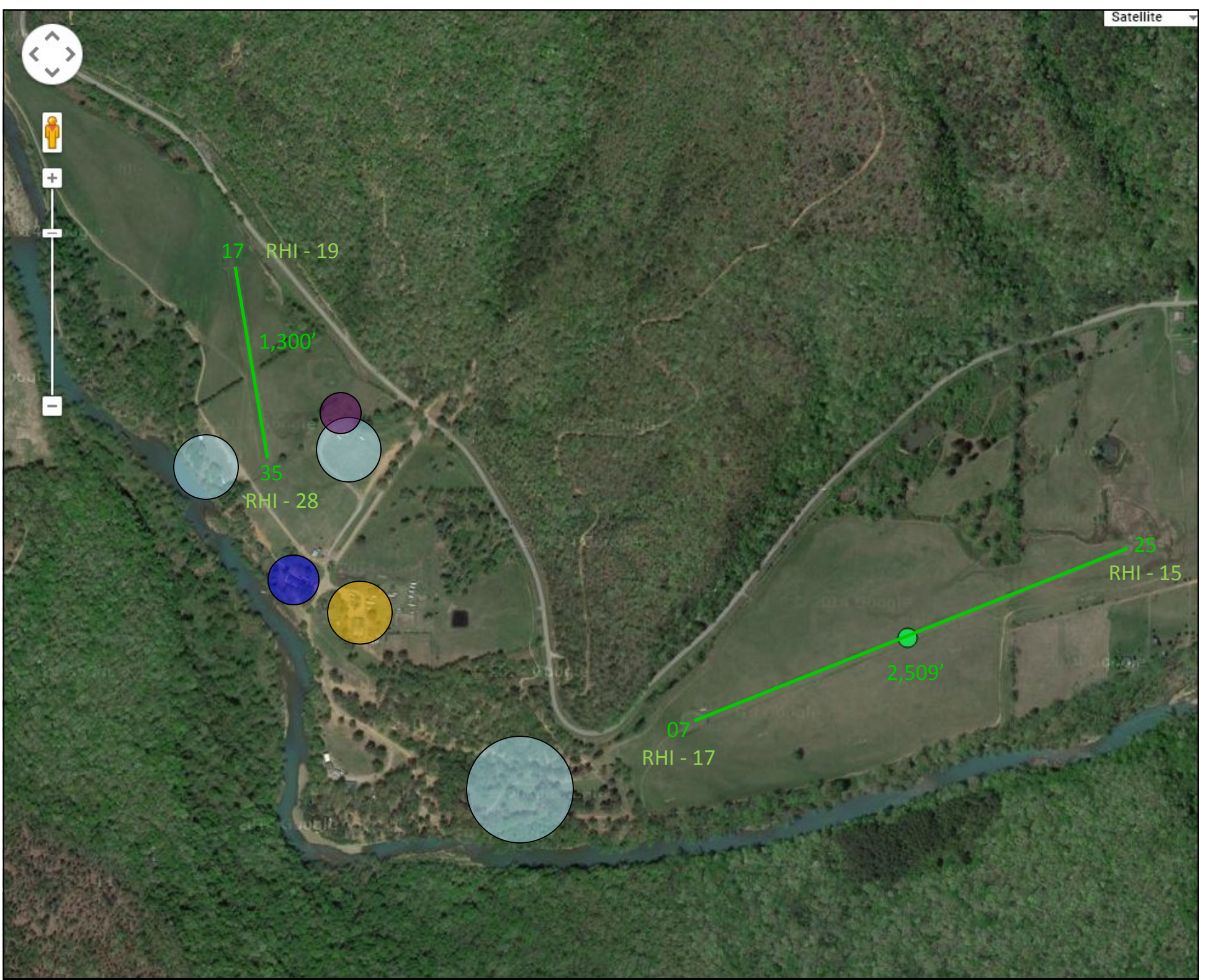
Region: Ozark

Tower: No

Fuel : No

Frequency: 122.9

User Rating: ★★★★★



Amenities:

Shown on map:

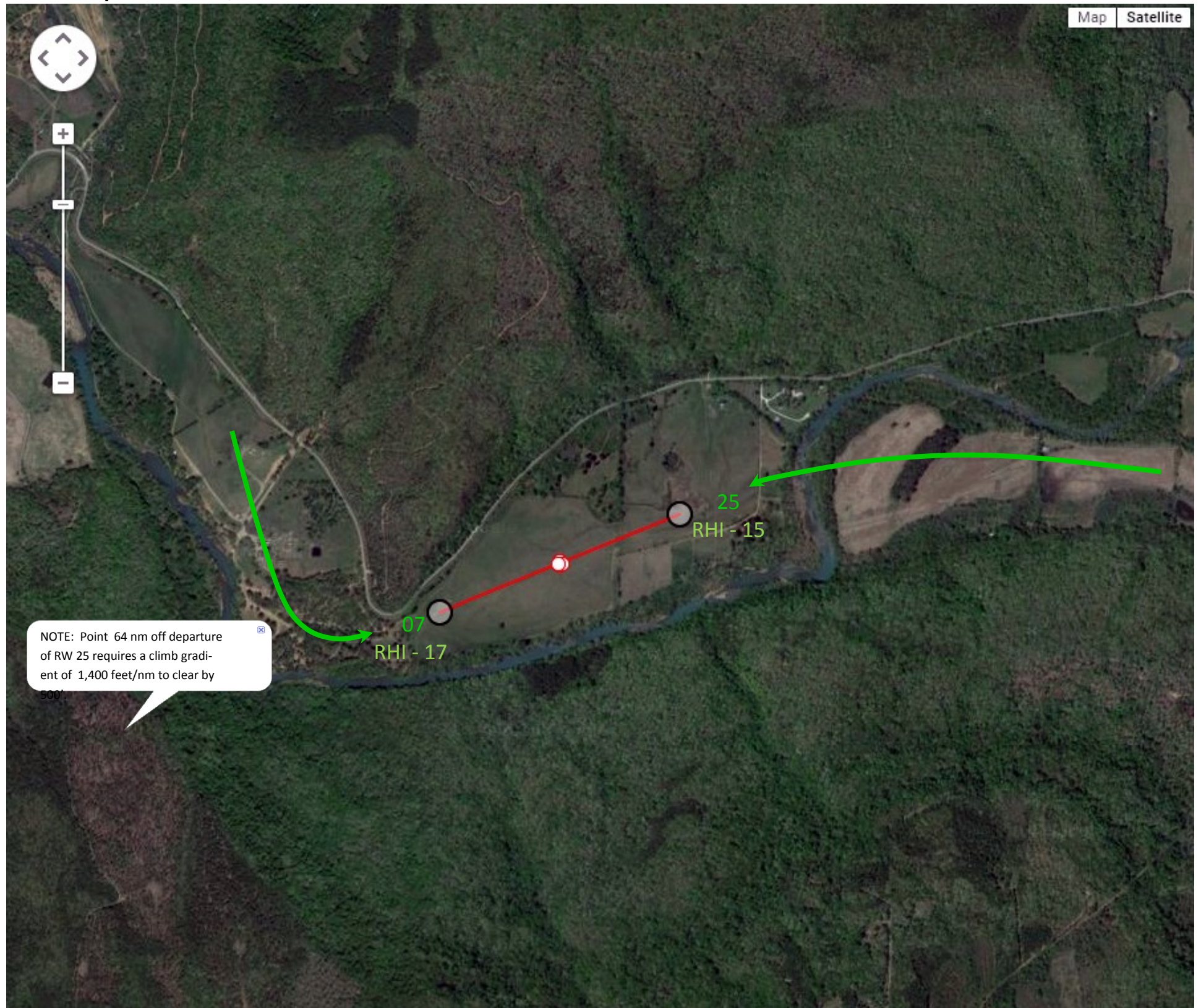
Camping	Restaurant
Outfitter	Lodging

Additional Amenities:

Swimming	Showers	Fishing	Canoeing	Restrooms
Road Biking	Mountain Biking	Climbing	Hiking	WiFi

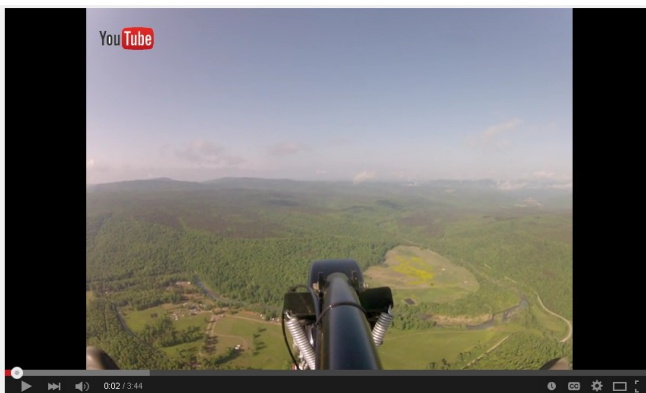
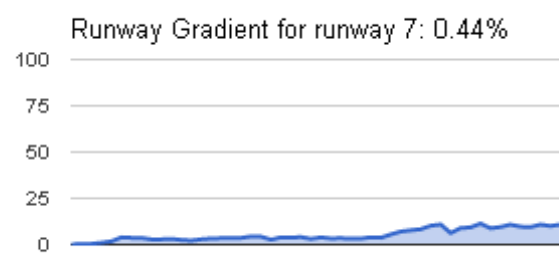


Runway 7/25 - 2,485' x 40'



NOTE: Point 64 nm off departure of RW 25 requires a climb gradient of 1,400 feet/nm to clear by

RW Directional ID: 7
 True Alignment: 68
 Latitude: 35.676134
 Longitude: -93.736203



Runway 7 Landing Video

RW Directional ID: 25
 True Alignment: 248
 Latitude: 35.678706
 Longitude: -93.728450

